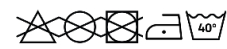


NEBRASKA SS6436



DESCRIPTION

2-layer softshell. 1.- Inverted zip with matching chin protector and puller. 2.- Inner lining in fleece fabric. 3.- Outside pocket on right chest with matching zip and puller. 4.- Two outside pockets with matching zip and puller. 5.- Velcro fasteners in cuffs. 6.- Bottom hem with elastic cord and stoppers. Fitted-cut in women's model.

COMPOSITION

Two layers. Shell: 92% polyester / 8% elastane. Lining: 100% extra warm microfleece polyester. 300 gsm.

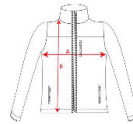
REMARKS

*Water resistant. *Wind-proof. *Duo concept. *Kids sizes available. *Always consider the limitations of this type of fabric and the need to protect the ink from migrations when printing it. *DTF printing not recommended for this model.

SIZES

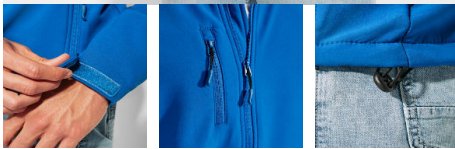
Adults:: S · M · L · XL · 2XL · 3XL · 4XL / Kids:: 4 · 6 · 8 · 10 · 12 · 14 · 16

SCHEME



QUANTITIES

	Box	Pack
Adults:	15 un.	1 un.
Kids:	15 un.	1 un.



COLORS

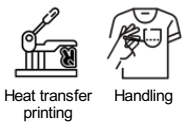


SIZES

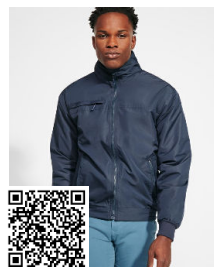
Adults:	S	M	L	XL	2XL	3XL	4XL
WIDTH (A)	52cm	55cm	58cm	62cm	65cm	69cm	73cm
LONG (B)	71cm	72cm	73cm	74cm	75cm	76cm	77cm
Kids:	4	6	8	10	12	14	16
WIDTH (A)	36cm	38cm	40cm	42cm	44cm	46cm	48cm
LONG (B)	47cm	51cm	55cm	59cm	63cm	66cm	70cm

[*Measured from the edge 1 cm below the sleeves / Measured from the highest point of the shoulder to the end of the garment]

PRINTING TECHNIQUES AVAILABLE



RELATED MODELS



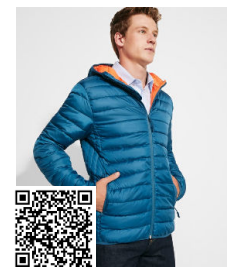
YUKON CQ1108



MINSK CQ1120



NEVADARA1199



NORWAY RA5090